

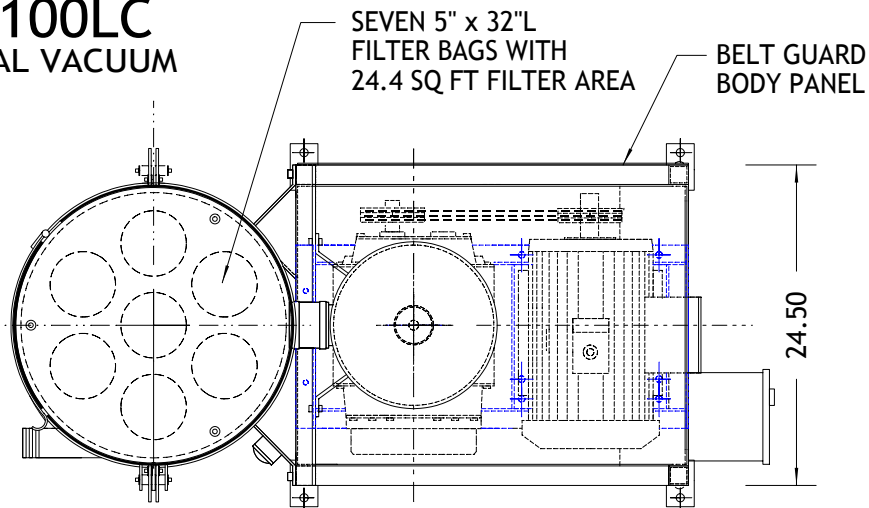
MODEL DVP100LC

10 HP P.D. CENTRAL VACUUM

LARGE, EASY ACCESS
FILTER SERVICE DOOR

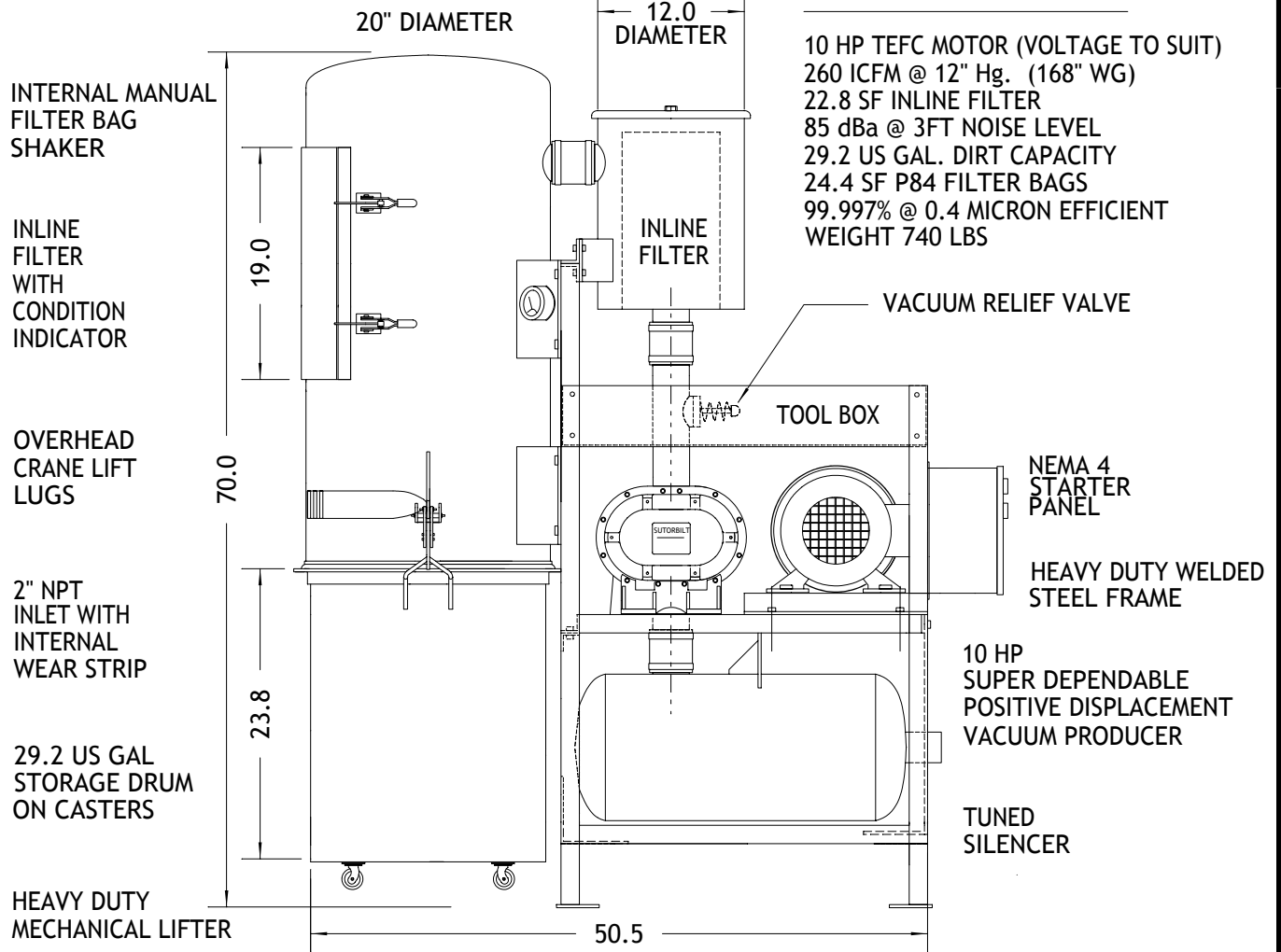
SUPER EFFICIENT
FILTRATION

FILTER CONDITION
INDICATOR GAUGE



SPECIFICATIONS:

10 HP TEFC MOTOR (VOLTAGE TO SUIT)
260 ICFM @ 12" Hg. (168" WG)
22.8 SF INLINE FILTER
85 dBa @ 3FT NOISE LEVEL
29.2 US GAL. DIRT CAPACITY
24.4 SF P84 FILTER BAGS
99.997% @ 0.4 MICRON EFFICIENT
WEIGHT 740 LBS



C:\DCAD\DWGS\DVX\20PD_DWGS\DVP100LC.DWG KRW MAR 02

			DATE:	MAR 02	NORTHWIND AIR SYSTEMS BRAMPTON, ONTARIO
			DRAWN BY:	KRW	
1			SCALE:	N.T.S.	DuroVac DVP100LC CONTINUOUS DUTY 10 HP VACUUM
0	MAR 02	ISSUED FOR REVIEW	DRAWING No.	Rev.	
No.	DATE	REVISIONS	D1003059	00	