

# MODEL DVR1203

## 11.5 HP VACUUM SYSTEM

LARGE, EASY ACCESS  
FILTER SERVICE DOOR

SUPER EFFICIENT  
FILTRATION

FILTER CONDITION  
INDICATOR GAUGE

EFFECTIVE  
FILTER BAG  
SHAKER

**FILTERS NEVER  
NEED CLEANING  
AS THE CANISTER  
FILLS.**

OPTIONAL HEPA  
FILTER WITH  
CONDITION  
INDICATOR

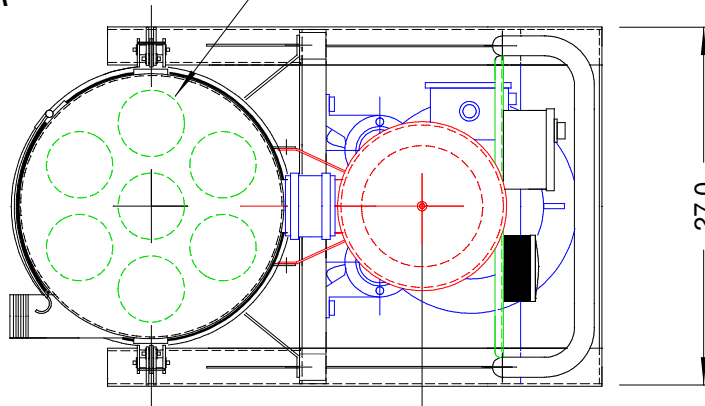
HEAVY DUTY  
8" FRONT  
WHEELS

3.0" NPT  
INLET WITH  
INTERNAL  
WEAR STRIP

25.1 US GALLON  
STORAGE DRUM

OPTIONAL EQUALIZER  
KIT ALLOWS GARBAGE BAG  
LINER IN DRUM

**SEVEN (7) FILTER BAGS WITH  
30.8 SQ FT FILTER AREA**



20" DIAMETER  
BAGHOUSE FILTER

**SPECIFICATIONS:**

11.5 HP MOTOR (VOLTAGE TO SUIT)  
**385 SCFM MAX**  
**141" STATIC PRESSURE MAX**  
30.8 SF FILTER BAGS  
99.997% @ 0.4 MICRON EFFICIENT  
25.1 US GALLON STORAGE DRUM  
81 dBa NOISE LEVEL  
WEIGHT 555 LBS

OPTIONAL INLINE FILTER  
WITH AVAILABLE HEPA UPGRADE

VACUUM GAUGE  
& RELIEF VALVE  
STANDARD

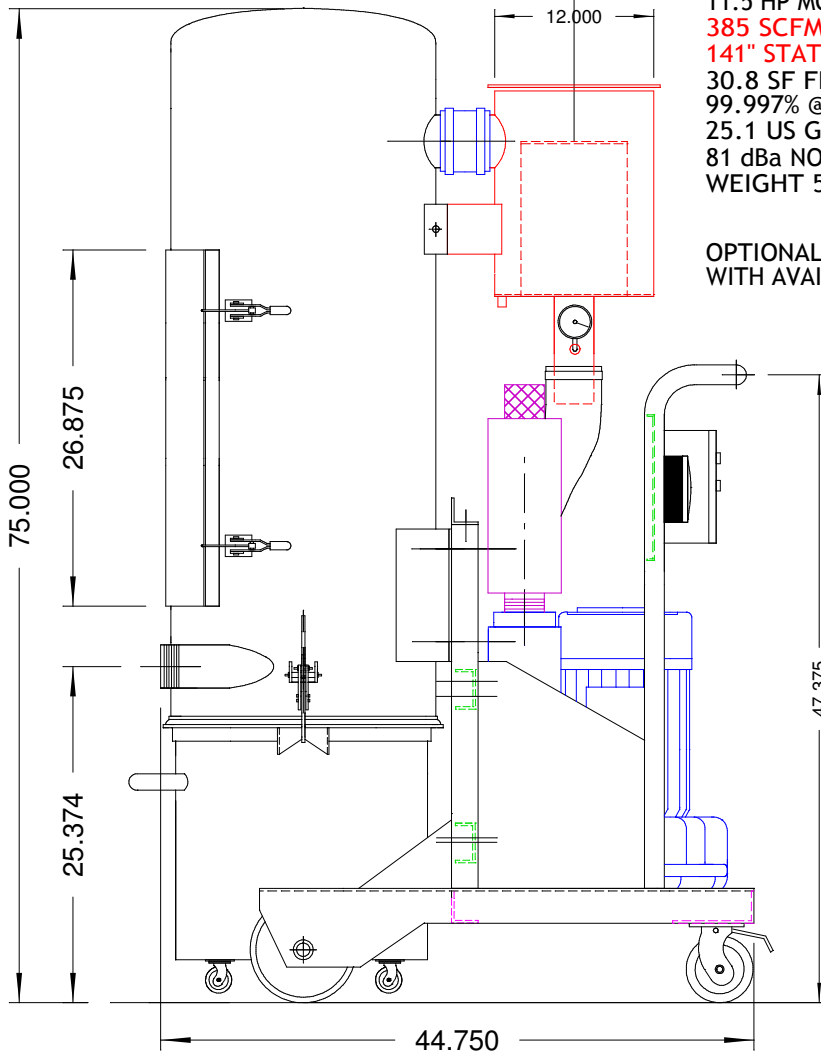
NEMA 12  
STARTER PANEL  
& DP GAUGE

HEAVY DUTY ALL  
STEEL FRAME

11.5 HP  
QUIET, DEPENDABLE  
VACUUM PRODUCER

EFFECTIVE, BUILT-IN  
SILENCER

LOCKABLE  
5" SWIVEL CASTERS



			DATE:	OCTOBER 2005	DUROVAC INDUSTRIAL VACUUMS BRAMPTON, ONT 888-330-3365
			DRAWN BY:	KRW	
			SCALE:	N.T.S.	
00	03 JUN 04	ISSUED FOR REVIEW	DRAWING No.	Rev.	<b>DuroVac DVR1203</b> CONTINUOUS DUTY VACUUM SYSTEM
No.	DATE	REVISIONS	501017 - D08	00	