

MODEL DVR503c

5.0 HP CENTRAL VACUUM

LARGE, EASY ACCESS
FILTER SERVICE DOOR

SUPER EFFICIENT
FILTRATION

FILTER CONDITION
INDICATOR GAUGE

EFFECTIVE
FILTER BAG
SHAKER

**FILTERS NEVER
NEED CLEANING
AS THE CANISTER
FILLS.**

OPTIONAL HEPA
FILTER WITH
CONDITION
INDICATOR

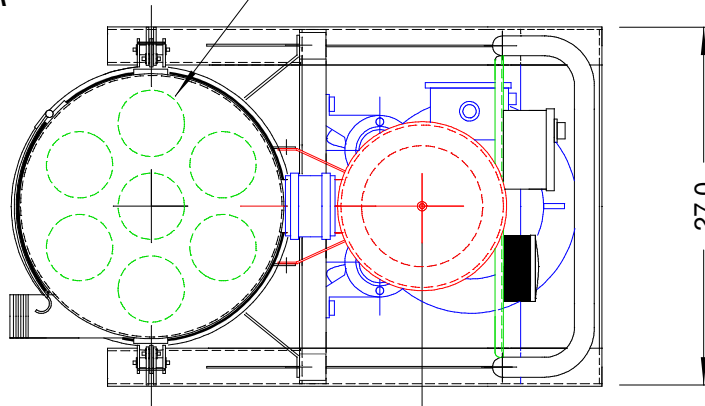
HEAVY DUTY
8" FRONT
WHEELS

3.0" NPT
INLET WITH
INTERNAL
WEAR STRIP

25.1 US GALLON
STORAGE DRUM

OPTIONAL EQUALIZER
KIT ALLOWS GARBAGE BAG
LINER IN DRUM

**SEVEN (7) FILTER BAGS WITH
30.8 SQ FT FILTER AREA**



20" DIAMETER
BAGHOUSE FILTER

SPECIFICATIONS:

- 5.0 HP MOTOR (VOLTAGE TO SUIT)
- 219 SCFM MAX
- 113" STATIC PRESSURE MAX
- 30.8 SF FILTER BAGS
- 99.997% @ 0.4 MICRON EFFICIENT
- 25.1 US GALLON STORAGE DRUM
- 75 dBa NOISE LEVEL
- WEIGHT 465 LBS

OPTIONAL INLINE FILTER
WITH AVAILABLE HEPA UPGRADE

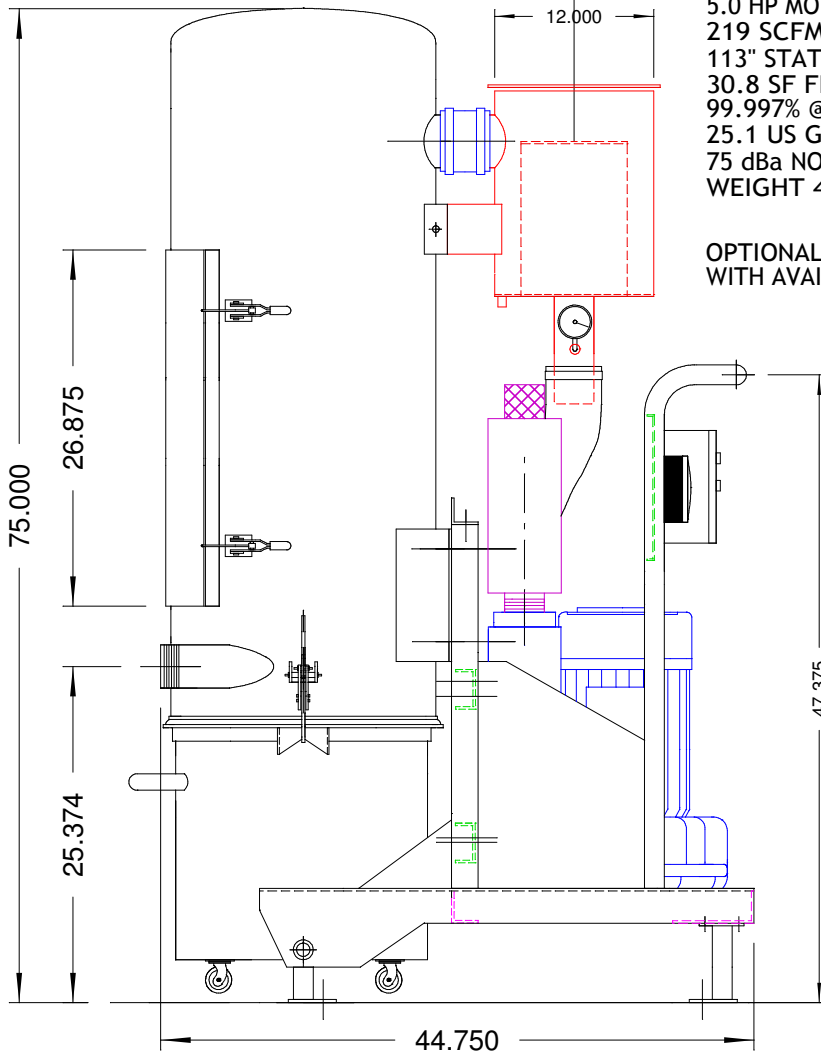
VACUUM GAUGE
& RELIEF VALVE
STANDARD

NEMA 12
STARTER PANEL
& DP GAUGE

HEAVY DUTY ALL
STEEL FRAME

5.0 HP
QUIET, DEPENDABLE
VACUUM PRODUCER

EFFECTIVE, BUILT-IN
SILENCER



			DATE:	OCTOBER 2005	DUROVAC INDUSTRIAL VACUUMS BRAMPTON, ONT 888-330-3365
			DRAWN BY:	KRW	
			SCALE:	N.T.S.	
00	03 JUN 04	ISSUED FOR REVIEW	DRAWING No.	Rev.	DuroVac DVR503c CONTINUOUS DUTY VACUUM SYSTEM
No.	DATE	REVISIONS	501017 - D06B	00	